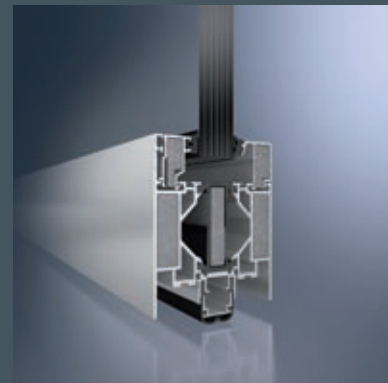


Technische Daten Technical data

Neben der Forderung nach Brand- und Rauchschutz erfüllen Türen, Verglasungen und Fassaden weitere sicherheitstechnische Anforderungen. Auf den folgenden Seiten finden Sie eine Übersicht der Profile.

Doors, glazing and façades meet a range of other safety requirements as well as offering fire and smoke protection. On the following pages, you will find an overview of the profiles.



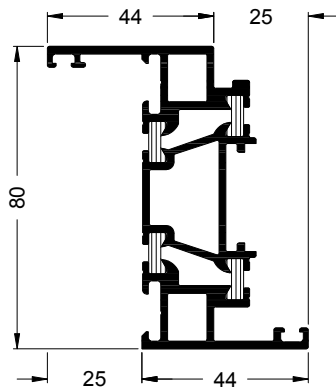
- 322 Schüco ADS 80 FR 30
Schüco ADS 80 FR 60
- 328 Firestop T90/F90
- 334 Schüco AWS 60 FR 30
- 336 Schüco AWS 70 FR 30
- 338 FW 50+ BF
- 344 FW 60+ BF
- 348 Schüco ADS 65.NI FR 30
Schüco ADS 65.NI SP
- 354 Iconübersicht
Icon overview

Profilübersicht Schüco ADS 80 FR 30/ADS 80 FR 60

Profile overview for Schüco ADS 80 FR 30/ADS 80 FR 60

Blendrahmenprofile

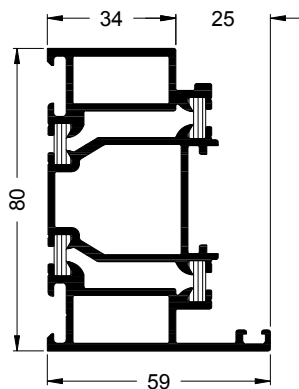
Outer frame profiles



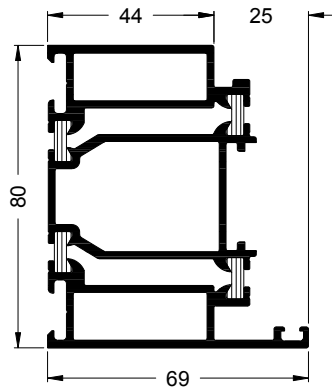
150 320 (ADS 80 FR 30)

	I_x	I_y	W_x	W_y
	cm ⁴	cm ⁴	cm ³	cm ³
150 320	39,93	12,62	9,87	3,35
150 330	38,70	13,56	8,92	3,46
150 340	42,49	21,12	10,03	5,77
150 870	45,33	23,72	10,55	5,36
150 950	49,03	35,69	11,65	8,57
300 650	51,34	42,72	12,21	9,78

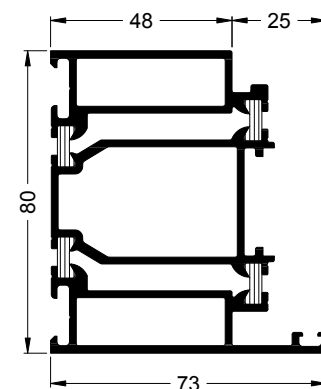
Brandisolatoren zur Vereinfachung hier nicht gezeichnet.
To keep it simple, fireboards are not drawn in here.



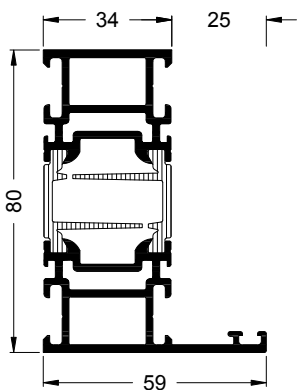
150 340 (ADS 80 FR 30/60)



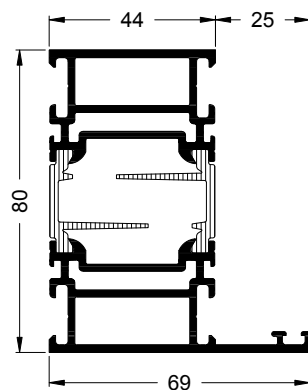
150 950 (ADS 80 FR 30/60)



300 650 (ADS 80 FR 30)

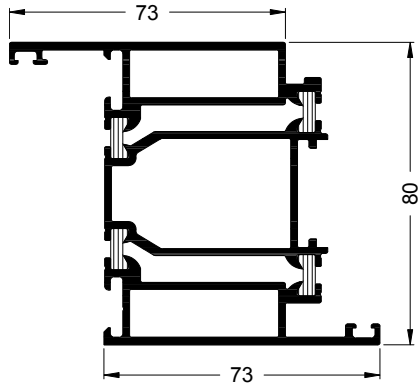


150 330 (ADS 80 FR 30/60)

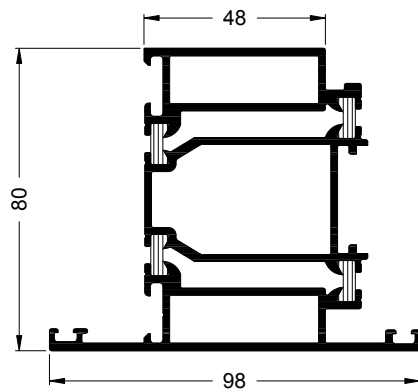


150 870 (ADS 80 FR 30/60)

Flügelprofile
Leaf profiles

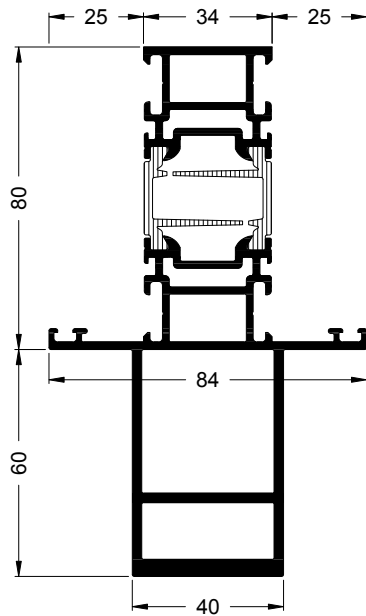


150 360 (ADS 80 FR 30/60)

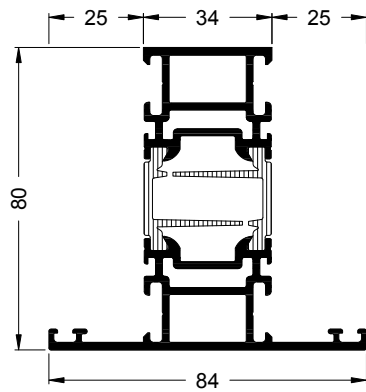


150 350 (ADS 80 FR 30/60)

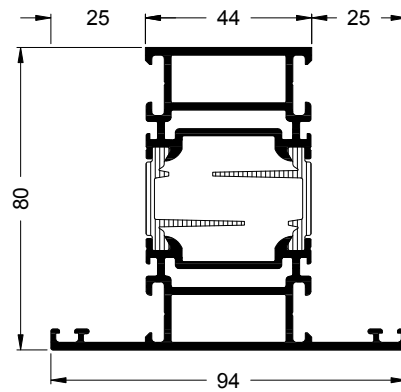
Pfosten- und Riegelprofile Mullion and transom profiles



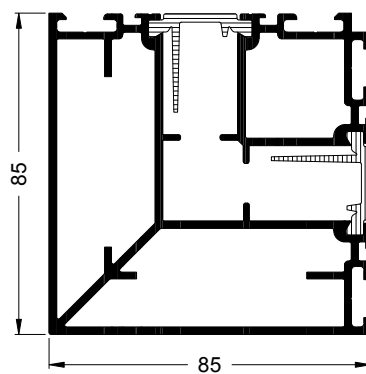
150 300 (ADS 80 FR 30/60)



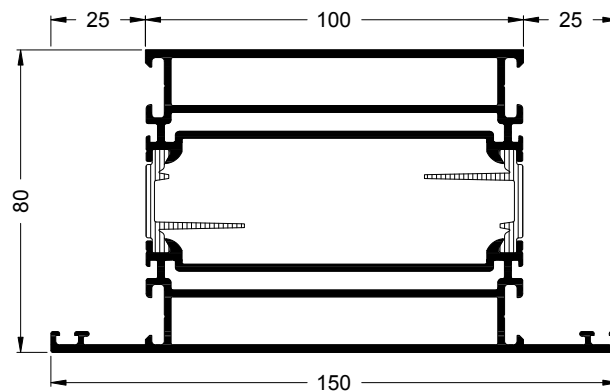
150 380 (ADS 80 FR 30/60)



150 890 (ADS 80 FR 30/60)



150 390 (ADS 80 FR 30)

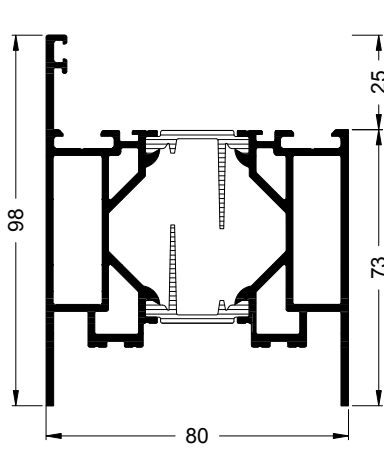


150 920 (ADS 80 FR 30/60)

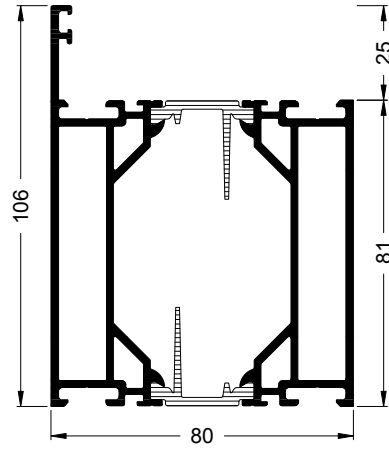
	I_x	I_y	W_x	W_y
	cm ⁴	cm ⁴	cm ³	cm ³
150 300	175,54	33,60	22,92	8,00
150 380	43,67	20,52	9,44	4,89
150 390	67,44	96,34	15,28	21,82
150 890	50,48	32,89	11,10	7,00
150 920	87,90	199,75	20,35	26,63

Brandisolatoren zur Vereinfachung hier nicht gezeichnet.
To keep it simple, fireboards are not drawn in here.

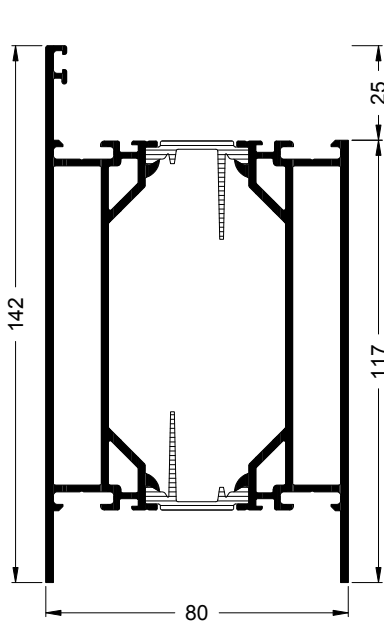
Sockelprofile
Sill rail profiles



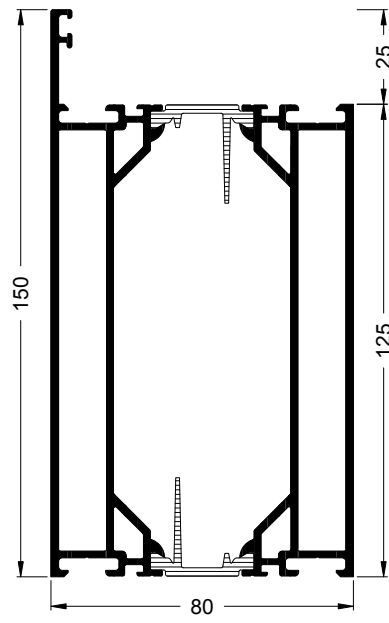
150 410 (ADS 80 FR 30/60)



151 820 (ADS 80 FR 30/60)

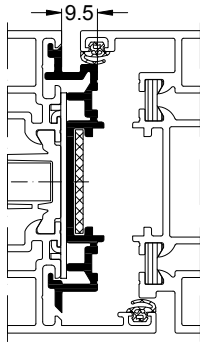


150 860 (ADS 80 FR 30/60)

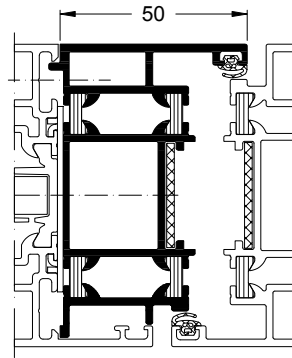


150 420 (ADS 80 FR 30/60)

Anschlagprofile Rebate profiles

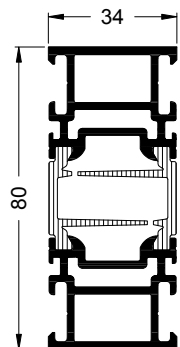


150 280 (ADS 80 FR 30/60)

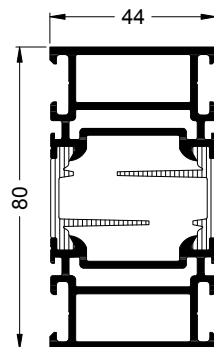


150 290 (ADS 80 FR 30/60)

Verbreiterungsprofil Extension profile

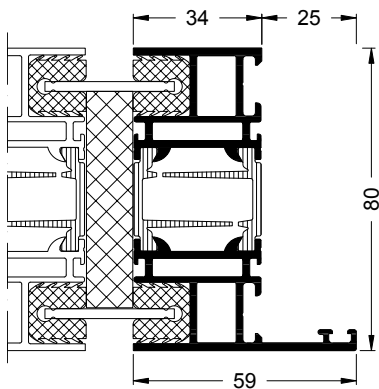


397 190 (ADS 80 FR 30/60)



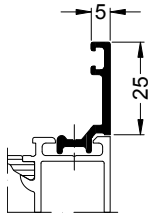
300 660 (ADS 80 FR 30/60)

Kopplungsprofil Coupling profile

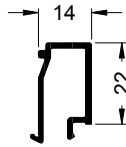


150 370 (ADS 80 FR 30)

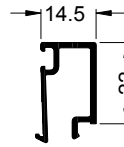
Glasleisten
Glazing beads



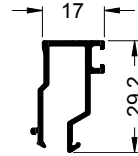
184 110 (ADS 80 FR 30)



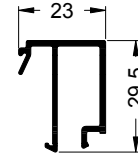
178 740 (ADS 80 FR 30)



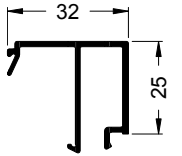
178 730 (ADS 80 FR 30)



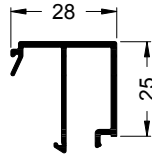
173 820 (ADS 80 FR 60)



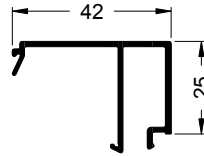
173 810 (ADS 80 FR 60)



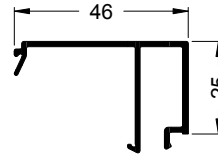
150 790 (ADS 80 FR 30)



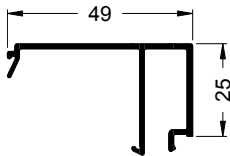
173 220 (ADS 80 FR 30)



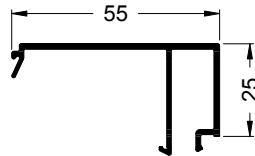
150 800 (ADS 80 FR 30)



150 810 (ADS 80 FR 30)

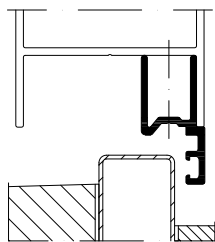


150 830 (ADS 80 FR 30)

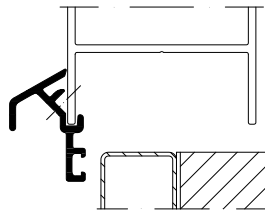


173 800 (ADS 80 FR 30)

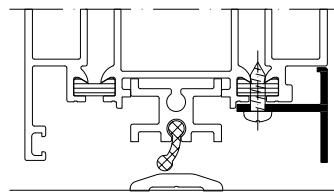
Zusatzprofile
Supplementary profiles



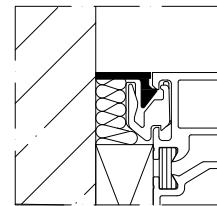
184 730 (ADS 80 FR 30/60)



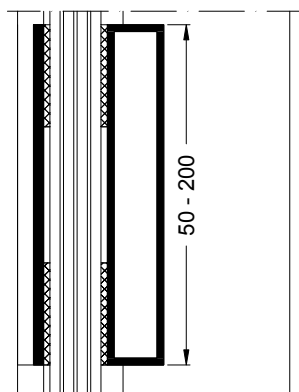
184 710 (ADS 80 FR 30/60)



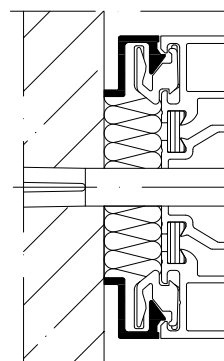
151 850 (ADS 80 FR 30/60)



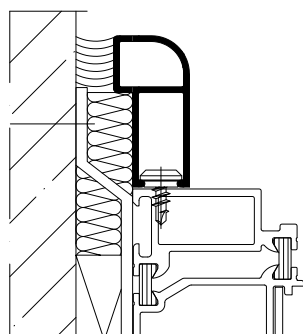
184 430 (ADS 80 FR 30/60)



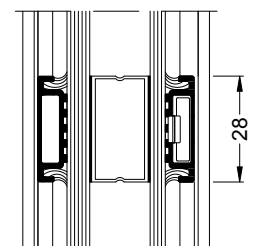
134 610 (ADS 80 FR 30/60)



149 390 (ADS 80 FR 30/60)



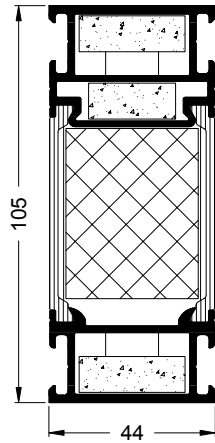
152 050 (ADS 80 FR 30/60)



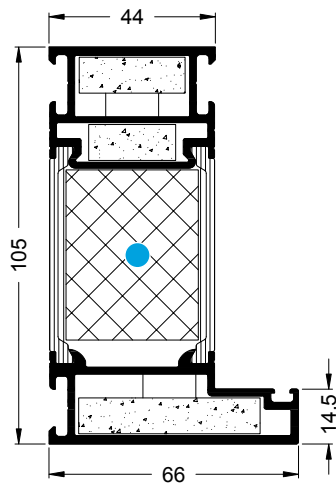
189 660 (ADS 80 FR 30/60)

Firestop T90/F90

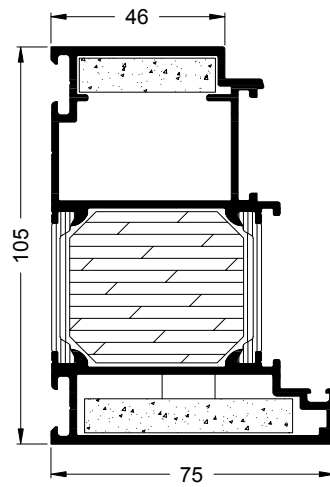
Blendrahmenprofile Outer frame profiles



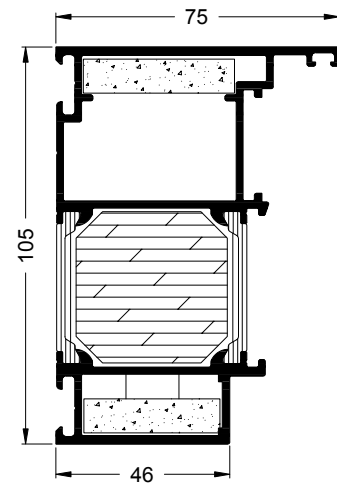
149 880



149 740



150 100

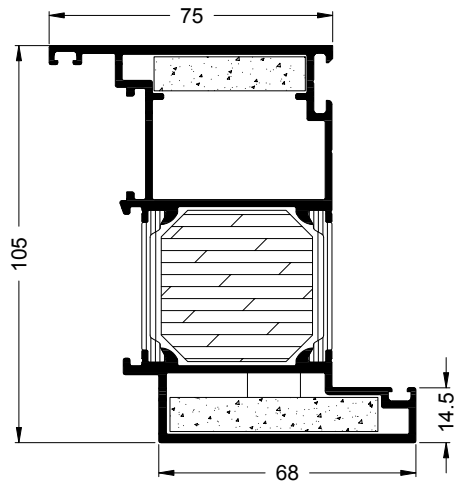


150 010

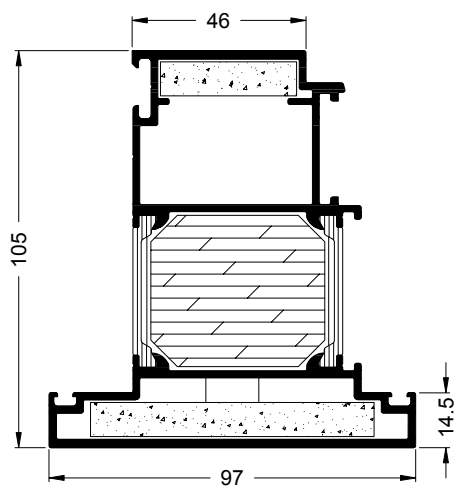
	I_x	I_y	W_x	W_y
	cm ⁴	cm ⁴	cm ³	cm ³
149 740	71,27	26,96	12,68	6,86
149 880	61,00	14,83	11,24	6,45
150 010	86,77	36,09	15,51	7,86
150 100	91,12	46,44	15,80	10,82

- Für Tür/Verglasungskombination mit Einsatzprofilen andere Isolatoren erforderlich.
 Different fire boards are required for door/glazing combination with insert profiles.

Türflügelprofile, nach innen und außen öffnend
Door leaf profiles, inward- and outward-opening

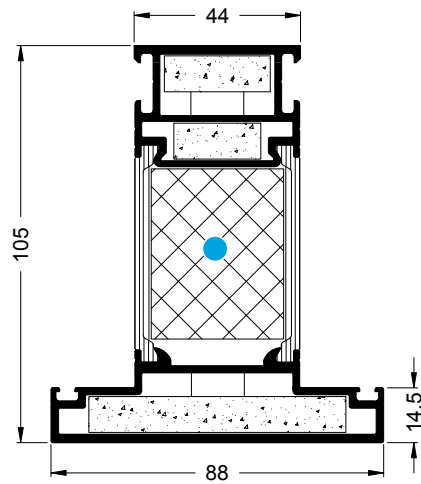


150 070

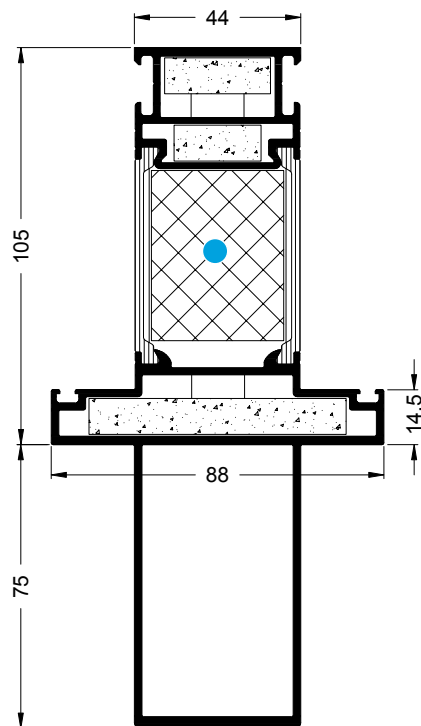


150 040

Pfosten- und Riegelprofile Mullion and transom profiles



149 780

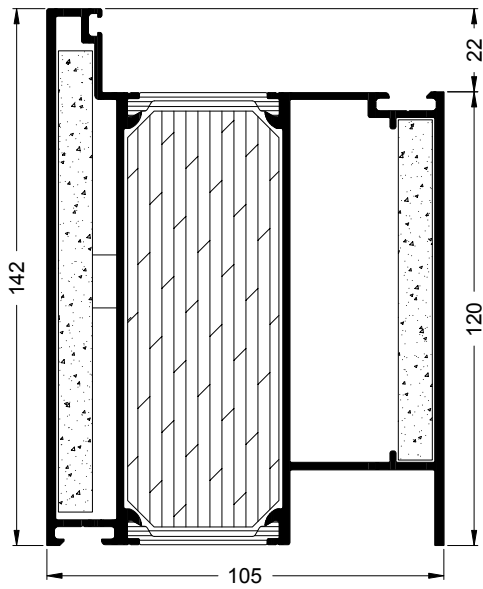


149 790

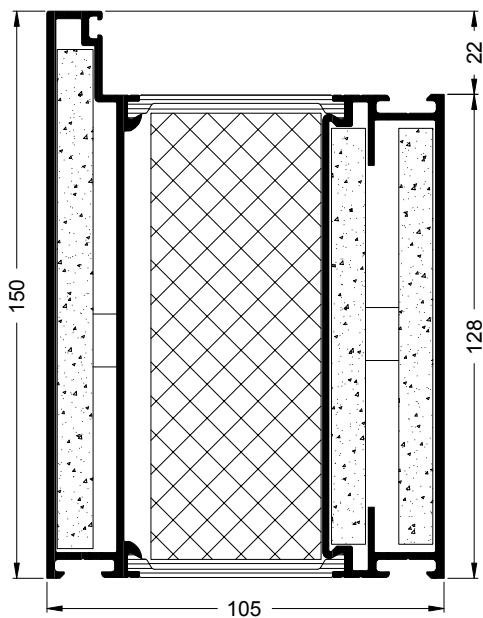
	I_x	I_y	W_x	W_y
	cm ⁴	cm ⁴	cm ³	cm ³
149 780	79,48	42,42	13,13	9,64
149 790	229,42	57,23	25,17	13,01

- Für Tür/Verglasungskombination mit Einsatzprofilen andere Isolatoren erforderlich.
 Different fire boards are required for door/glazing combination with insert profiles.

Sockelprofile
Sill rail profiles



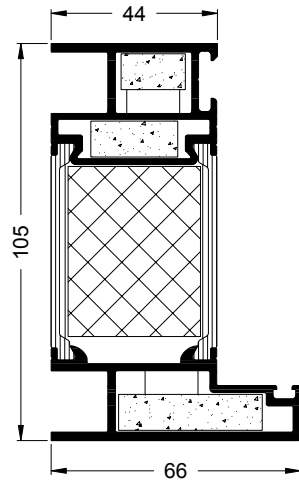
150 120



149 760

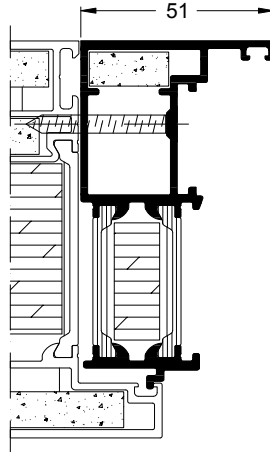
Technical data
Technische Daten

Kopplungsprofil Coupling profile

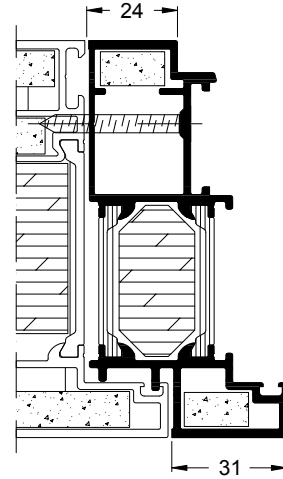


149 770

Einsatzprofile Insert profiles

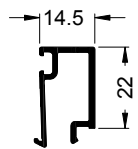


150 190

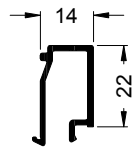


150 200

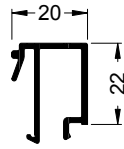
Glasleisten Glazing beads



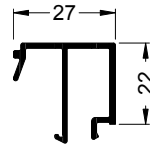
178 730



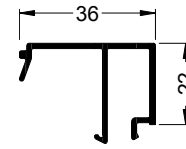
178 740



178 750



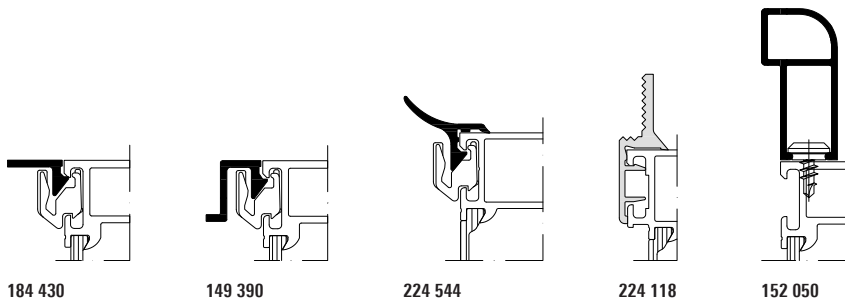
158 790



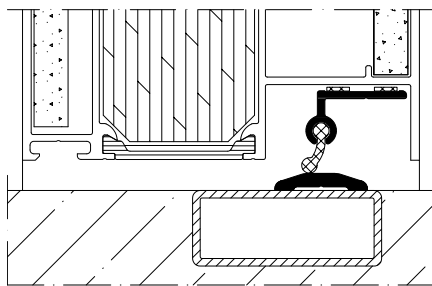
149 200

Für Glas- und Paneelstärken von 38 bis 58 mm
For glass and panel thicknesses from 38 to 58 mm

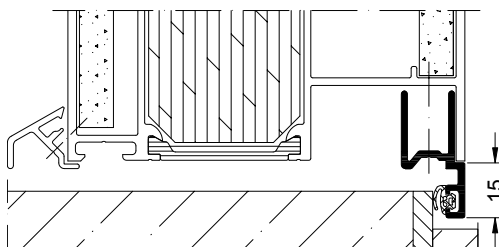
Wandanschlussprofile Wall attachment profiles



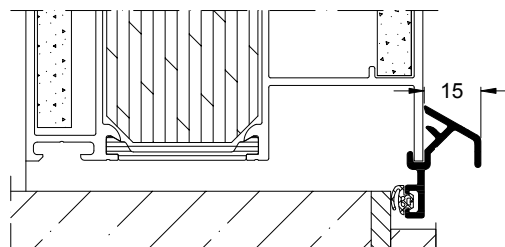
Zusatzprofile Supplementary profiles



157 340



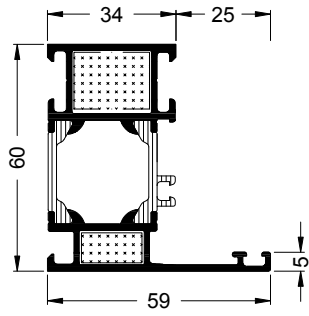
184 730



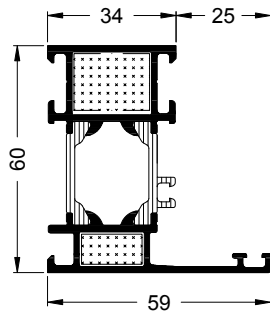
184 710

Schüco AWS 60 FR 30

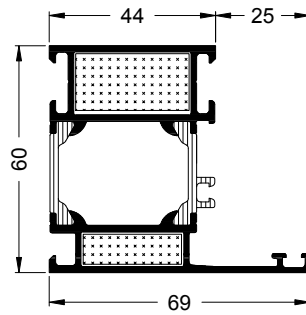
Blendrahmenprofile Outer frame profiles



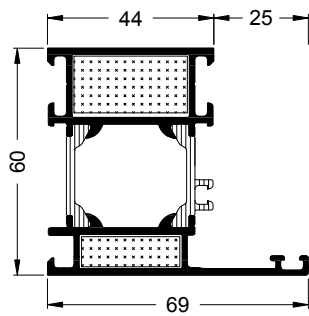
340 050



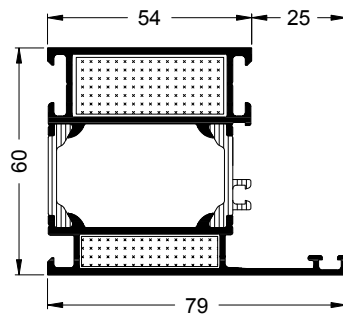
341 130



340 060



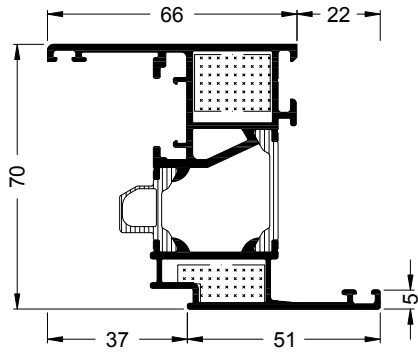
341 150



340 070

	I_x	I_y	W_x	W_y
	cm ⁴	cm ⁴	cm ³	cm ³
340 050	15,16	9,15	4,59	2,34
340 060	17,63	15,51	5,35	3,51
340 070	20,06	24,36	6,11	4,96
341 130	15,23	8,80	4,61	2,27
341 150	17,69	15,03	5,38	3,43

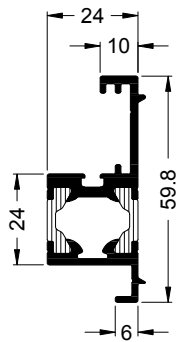
Flügelprofil
Leaf profile



319 330

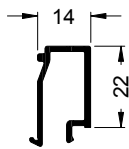
319 330	mm 60	mm 33	IV

Adapterprofil
Adapter profile

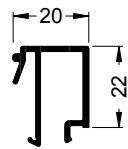


358 990

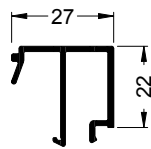
Glasleisten
Glazing beads



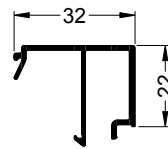
178 740



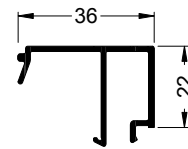
178 750



158 790



345 500

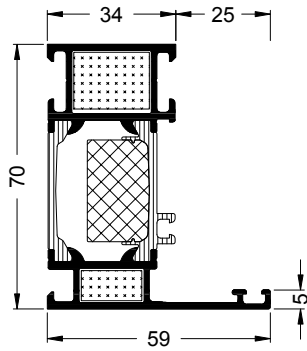


149 200

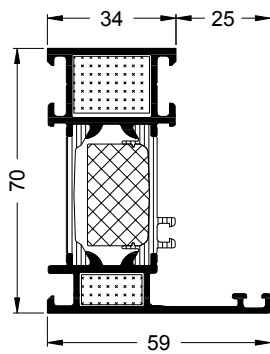
Technical data
Technische Daten

Schüco AWS 70 FR 30

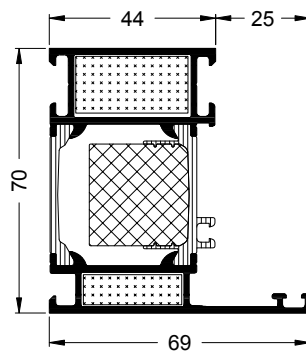
Blendrahmenprofile Outer frame profiles



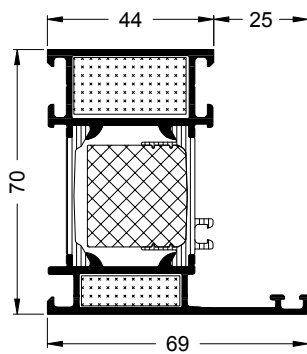
358 150



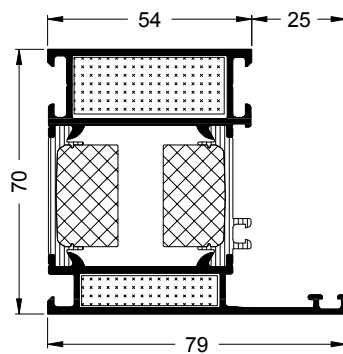
358 160







358 170



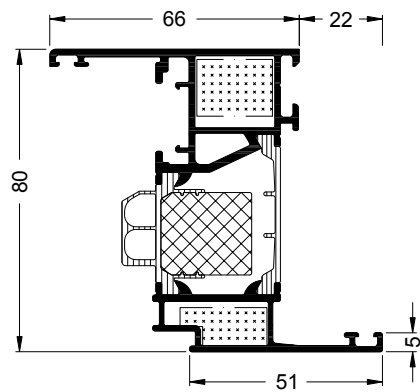
358 180



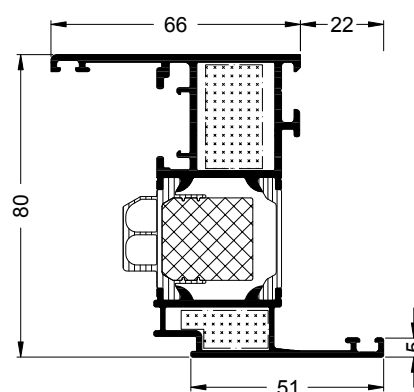
358 190

				
	cm ⁴	cm ⁴	cm ³	cm ³
358 150	22,38	9,15	5,87	2,34
358 160	22,46	8,80	5,91	2,27
358 170	25,94	15,51	6,83	3,51
358 180	26,02	15,03	6,87	3,43
358 190	29,49	24,36	7,79	4,96

Flügelprofil
Leaf profile



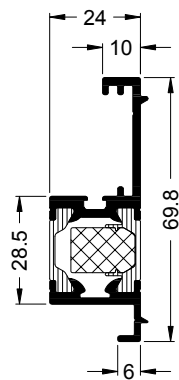
358 560



374 870

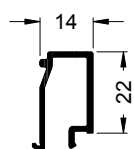
	mm	mm	
358 560	70	33	IV
374 870	70	33	IV

Adapterprofil
Adapter profile

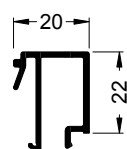


358 470

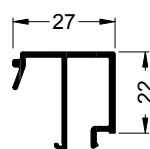
Glasleisten
Glazing beads



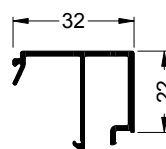
178 740



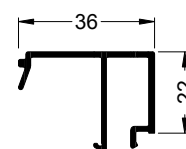
178 750



158 790



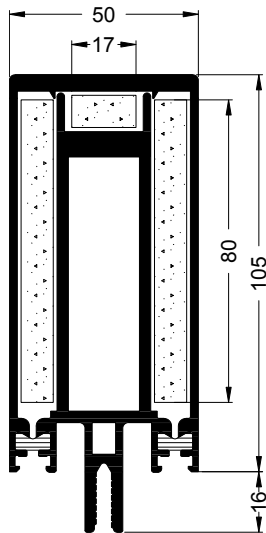
345 500



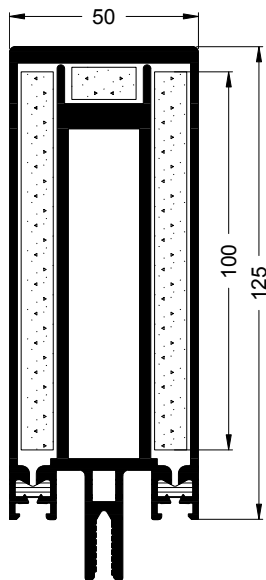
149 200

FW 50+ BF

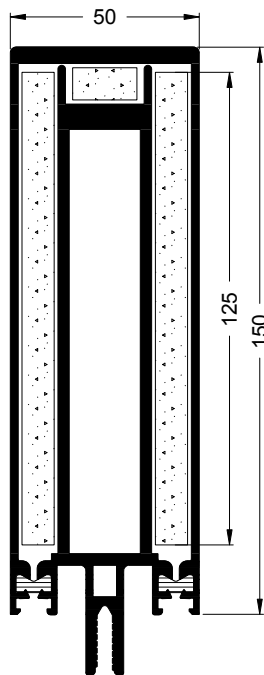
Pfostenprofile, 3. Ebene FW 50+ BF
 FW 50+ BF mullion profiles, level 3



326 390



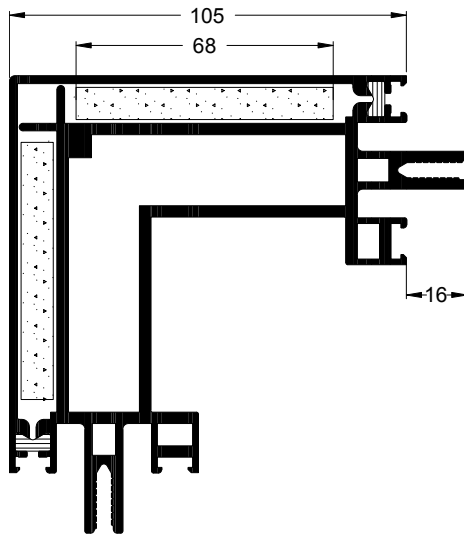
326 400






326 410

	I_x	I_y
	cm ⁴	cm ⁴
326 390	151,48	38,65
326 400	337,07	44,82
326 410	540,58	52,64

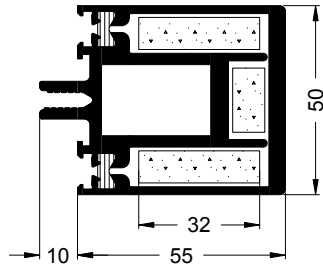
Eckprofile FW 50+ BF
FW 50+ BF corner profiles



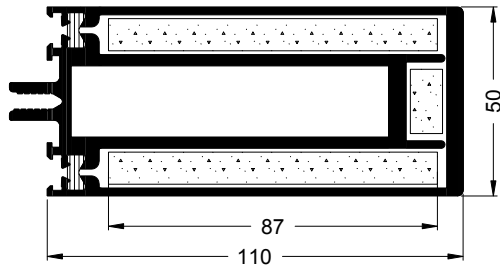
326 750

		
	I_x	I_y
	cm ⁴	cm ⁴
326 750	251,56	251,56

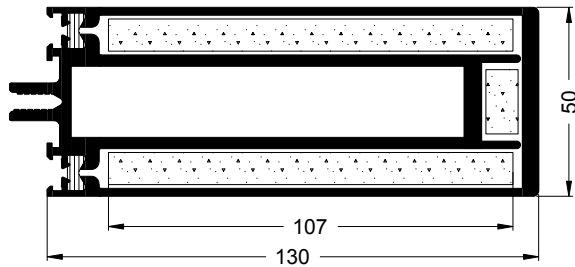
Riegelprofile, 1. Ebene FW 50+ BF
FW 50+ BF transom profiles, level 1



326 420



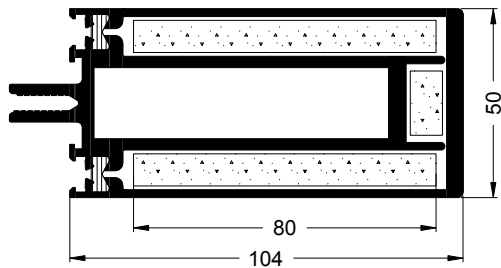
326 430



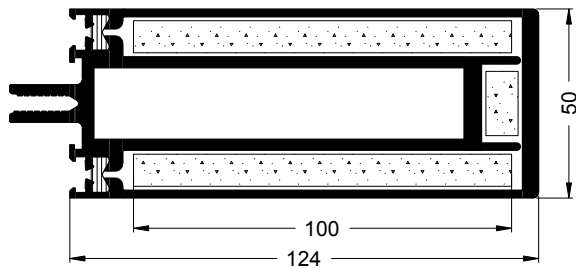
326 440

	I_x	I_y
	cm ⁴	cm ⁴
326 420	38,76	23,42
326 430	229,27	40,63
326 440	353,68	46,88

Riegelprofile, 2. Ebene FW 50+ BF
 FW 50+ BF transom profiles, level 2

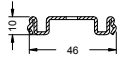


326 450



326 460

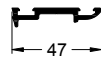
	I_x	I_y
	cm ⁴	cm ⁴
326 450	213,98	38,80
326 460	334,00	45,05

Andruckprofile**Pressure plate profiles**

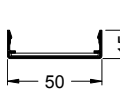
202 764



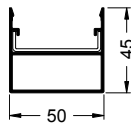
112 710



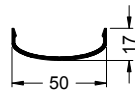
161 450

Deckschalen**Cover caps**

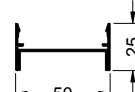
112 720



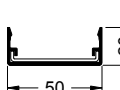
322 890



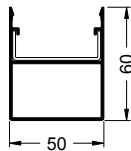
110 240



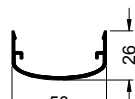
322 190



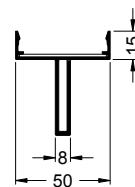
110 840



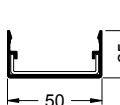
322 900



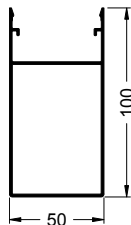
110 250



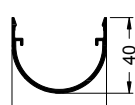
322 180



110 850



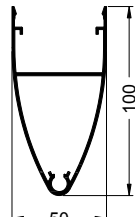
322 910



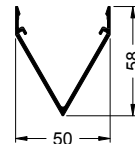
322 920



110 860



122 980

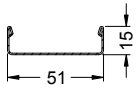


322 930

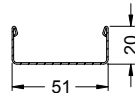


161 460

Deckschalen aus Edelstahl Stainless steel cover caps

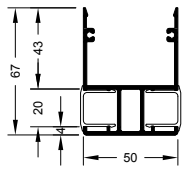


202 285

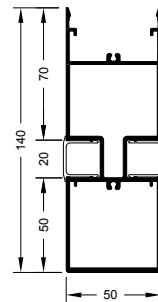


202 286

Sonnenschutz Solar shading



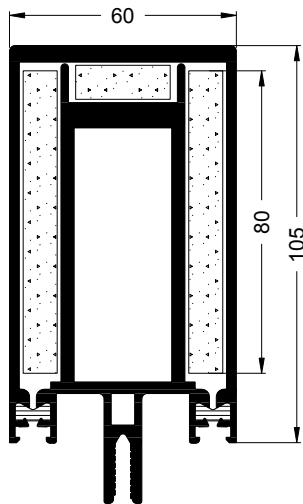
322 960



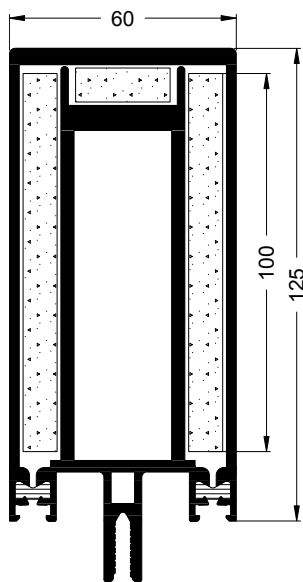
322 940

FW 60+ BF

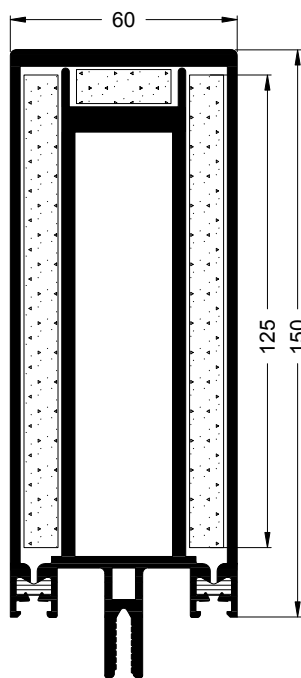
Pfostenprofile, 3. Ebene FW 60+ BF
 FW 60+ BF mullion profiles, level 3



327 050



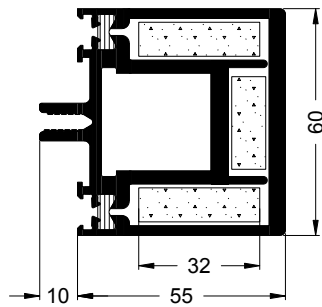
327 060



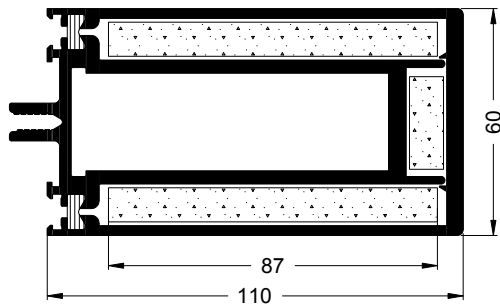
327 070

	I_x	I_y
	cm ⁴	cm ⁴
327 050	244,71	69,32
327 060	385,53	80,91
327 070	621,91	95,40

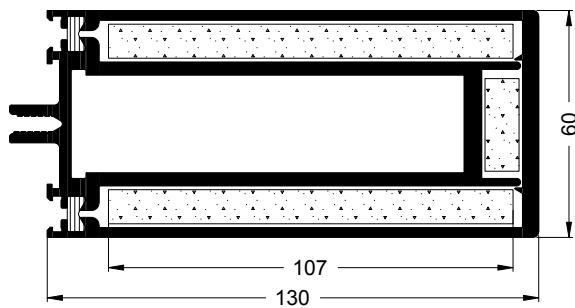
Riegelprofile, 1. Ebene FW 60+ BF
 FW 60+ BF transom profiles, level 1



327 090



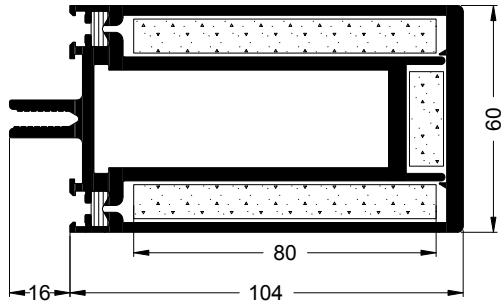
327 100



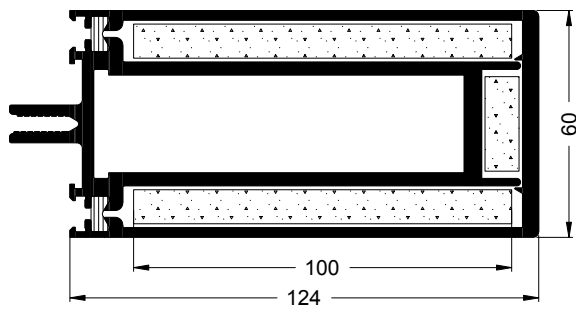
327 110

	I_x	I_y
	cm ⁴	cm ⁴
327 090	44,38	41,68
327 100	187,36	73,70
327 110	412,30	85,15

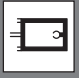


Riegelprofile, 2. Ebene FW 60+ BF
 FW 60+ BF transom profiles, level 2



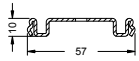
327 120



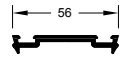
327 130

			
		I_x	I_y
		cm ⁴	cm ⁴
327 120		246,56	70,13
327 130		271,56	81,86

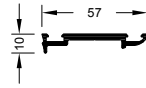
Andruckprofile Pressure plate profiles



202 769

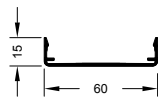


162 880

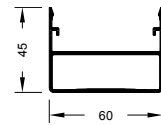


162 160

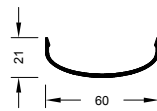
Deckschalen Cover caps



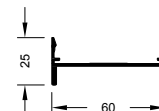
162 180



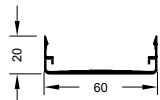
110 930



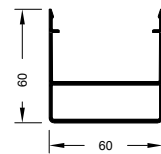
110 260



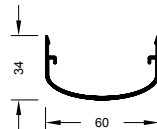
324 870



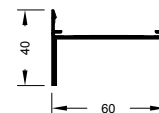
110 910



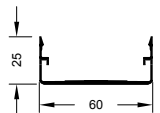
110 940



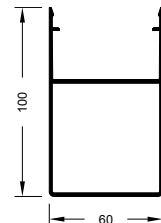
110 270



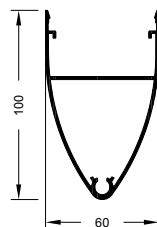
322 170



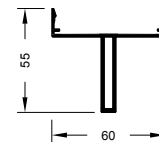
110 920



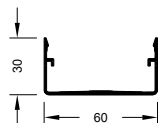
110 950



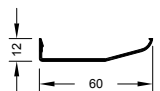
324 890



324 880

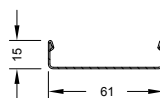


182 910

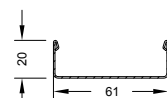


162 170

Deckschalen aus Edelstahl Stainless steel cover caps

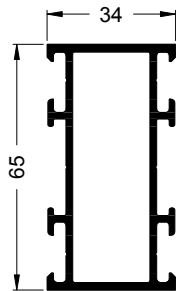


202 287

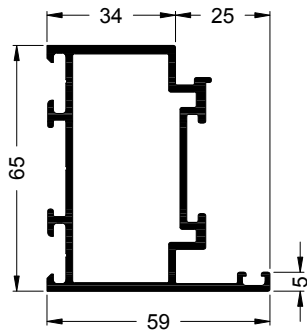


202 288

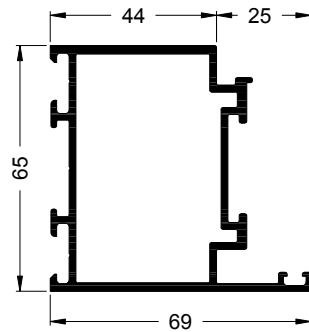
Schüco ADS 65.NI FR 30/Schüco ADS 65.NI SP

Blendrahmenprofile
Outer frame profiles





300 220 (ADS 65.NI FR 30/SP)



300 100 (ADS 65.NI FR 30/SP)

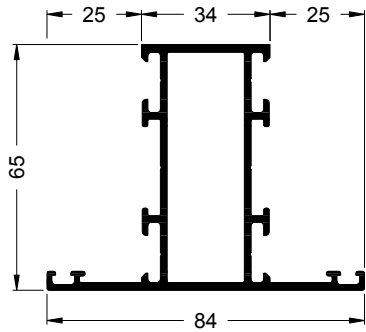


300 110 (ADS 65.NI FR 30/SP)

				
	cm ⁴	cm ⁴	cm ³	cm ³
300 100	30,10	14,37	8,49	4,06
300 110	34,48	23,76	9,79	5,92
300 220	23,06	5,96	7,10	3,51

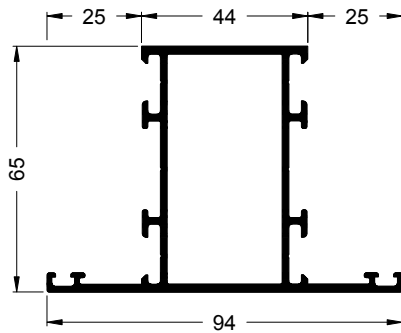
Brandschutzisolatoren zur Vereinfachung hier nicht gezeichnet.
To keep it simple, fireboards are not drawn in here.

Pfosten- und Riegelprofile
Mullion and transom profiles

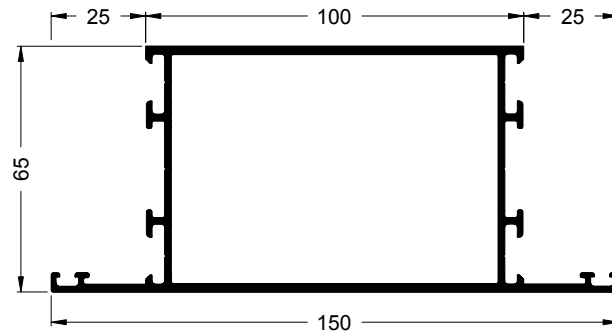


300 250 (ADS 65.NI FR 30/SP)

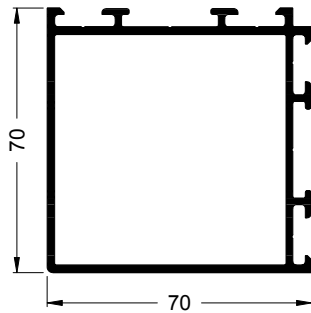
	I_x	I_y	W_x	W_y
	cm ⁴	cm ⁴	cm ³	cm ³
300 250	31,99	17,58	8,19	4,19
300 260	36,12	27,44	9,35	5,84
300 270	61,79	145,39	16,86	19,39
300 280	166,80	30,65	23,34	7,30
300 290	166,80	30,65	23,34	7,30
300 300	42,40	42,40	11,95	11,95



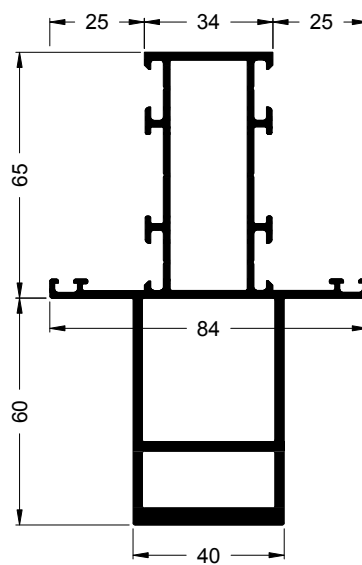
300 260 (ADS 65.NI FR 30/SP)



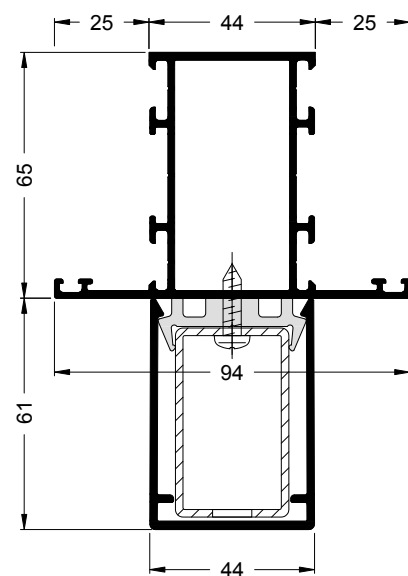
300 270 (ADS 65.NI FR 30/SP)



300 300 (ADS 65.NI SP)



300 280 (ADS 65.NI FR 30/SP) 6,0 m
300 290 (ADS 65.NI FR 30/SP) 4,1 m

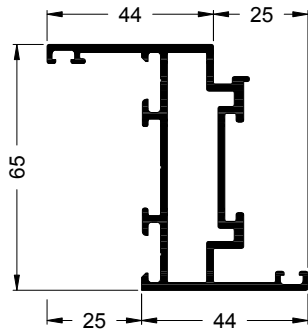


300 280 (ADS 65.NI FR 30/SP) 6,0 m
300 290 (ADS 65.NI FR 30/SP) 4,1 m

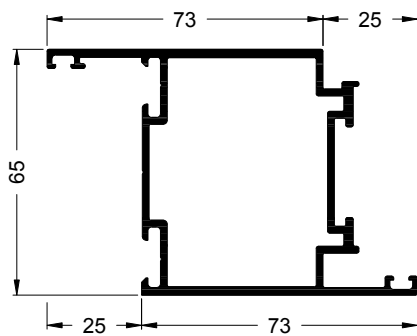
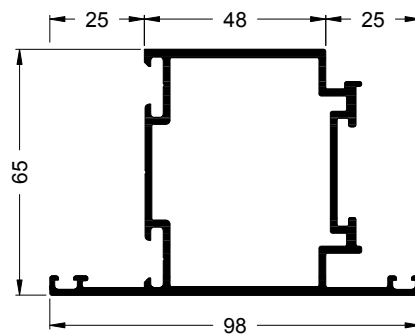
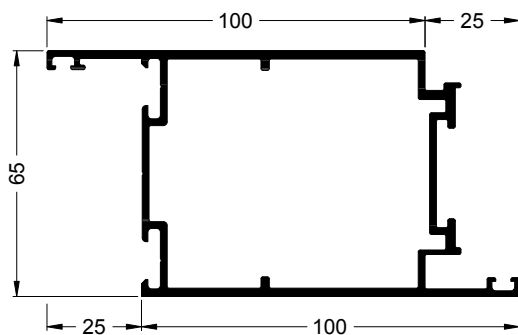
Technical data
Technische Daten

Türflügelprofile, nach innen und außen öffnend

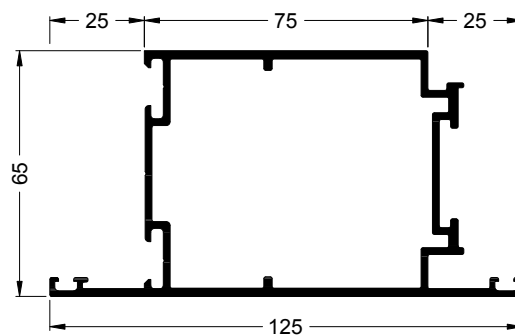
Door leaf profiles, inward- and outward-opening



300 120 (ADS 65.NI SP)

300 150 (ADS 65.NI FR 30/SP) 6,0 m
300 160 (ADS 65.NI FR 30/SP) 5,5 m300 130 (ADS 65.NI FR 30/SP) 6,0 m
300 140 (ADS 65.NI FR 30/SP) 5,5 m

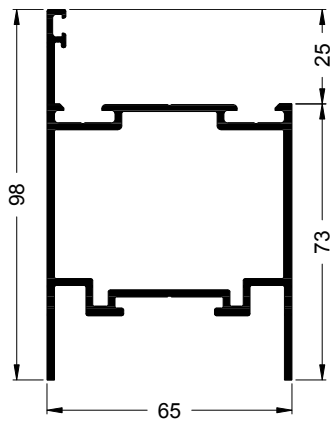
300 470 * (ADS 65.NI FR 30/SP) 6,5 m



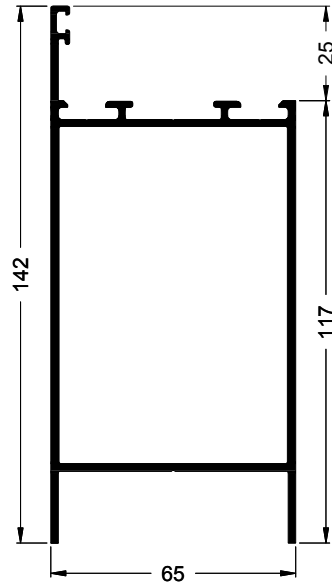
300 050 * (ADS 65.NI FR 30/SP) 6,5 m

* Länderspezifische Zulassung beachten
Adhere to country-specific requirements.

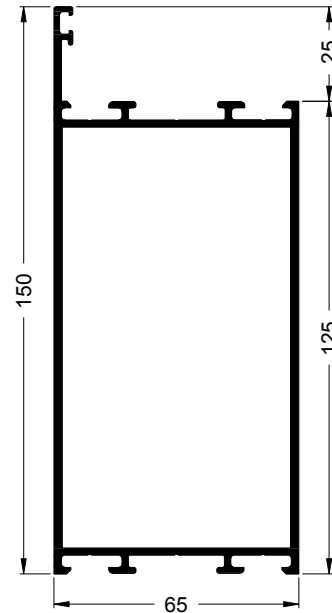
Sockelprofile
Sill rail profiles



300 340 (ADS 65.NI FR 30/SP) 6,0 m
300 350 (ADS 65.NI FR 30/SP) 1,5 m

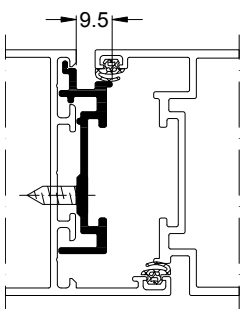


300 310 (ADS 65.NI FR 30/SP) 6,0 m
300 320 (ADS 65.NI FR 30/SP) 1,5 m

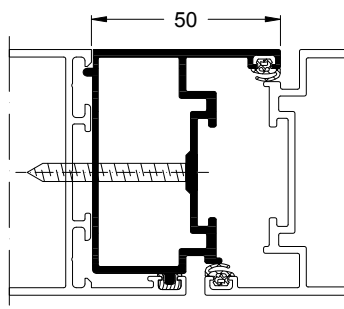


300 330 (ADS 65.NI FR 30/SP)

Anschlagprofile
Rebate profiles

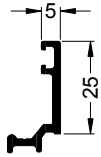


300 200 (ADS 65.NI FR 30/SP) 6,0 m
300 210 (ADS 65.NI FR 30/SP) 5,5 m

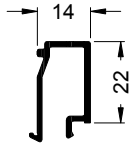


300 180 (ADS 65.NI FR 30/SP) 6,0 m
300 190 (ADS 65.NI FR 30/SP) 5,5 m

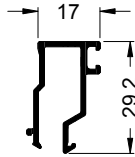
Glasleisten Glazing beads



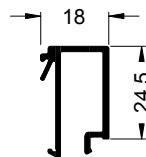
184 110
(ADS 65.NI SP)



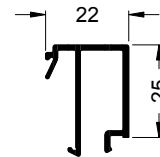
178 740
(ADS 65.NI FR 30/SP)



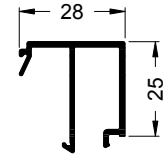
173 820
(ADS 65.NI FR 30)



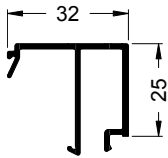
300 370
(ADS 65.NI FR 30)



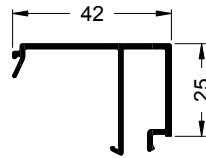
300 380
(ADS 65.NI FR 30)



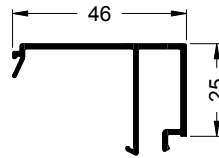
173 220
(ADS 65.NI FR 30/SP)



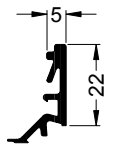
150 790
(ADS 65.NI FR 30/SP)



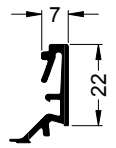
150 800
(ADS 65.NI FR 30/SP)



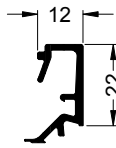
150 810
(ADS 65.NI FR 30/SP)



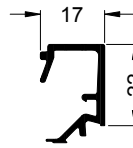
184 010
(ADS 65.NI SP)



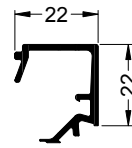
184 020
(ADS 65.NI SP)



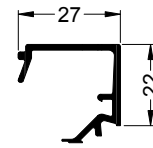
184 030
(ADS 65.NI SP)



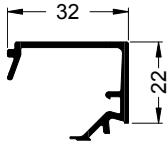
184 040
(ADS 65.NI SP)



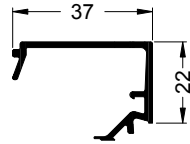
184 050
(ADS 65.NI SP)



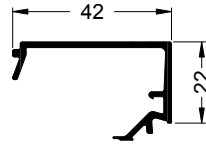
184 060
(ADS 65.NI SP)



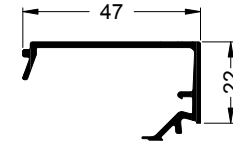
184 070
(ADS 65.NI SP)



184 080
(ADS 65.NI SP)

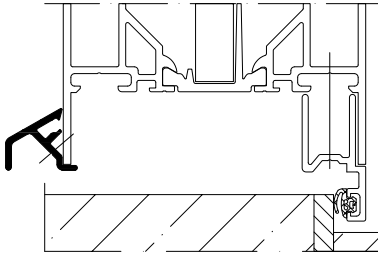


184 090
(ADS 65.NI SP)

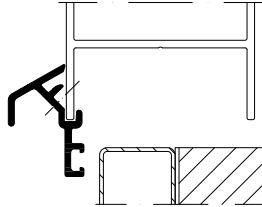


184 100
(ADS 65.NI SP)

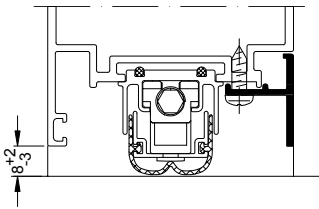
Zusatzprofile
Supplementary profiles



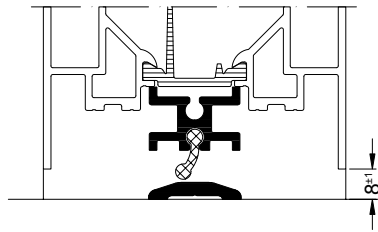
189 210 (ADS 65.NI FR 30/SP)



184 710 (ADS 65.NI FR 30/SP)



149 730 (ADS 65.NI FR 30/SP)



151 870 (ADS 65.NI FR 30/SP)

Iconübersicht

Icon overview

Die nachfolgenden Icons dienen zur vereinfachten Darstellung von Standardpositionen in den Tabellen der Technischen Daten.

The following icons are used for easier display of standard positions in the technical data tables.



I_x Trägheitsmoment
 I_x moment of inertia



max. Flügelgewicht
Max. vent weight



Farbe
Colour



I_y Trägheitsmoment
 I_y moment of inertia



max. Flügelgröße
Max. vent size



Material
Material



Bautiefe
Basic depth



Glasdickentoleranz
Glass thickness tolerance



Rosette
Rosette



Kompletprofil "Fenster, Türen"
Complete profile (windows/doors)



Glasmaßtoleranz
Glass size tolerance



Türdrücker
Door handle



Tragprofil "Fassadenbau"
Load-bearing profile
(façade construction)



Widerstandsmoment W_x
Moment of resistance W_x



allgemeine Daten
General data



Gewicht
Weight



Widerstandsmoment W_y
Moment of resistance W_y



Isolierstegabstand
Distance between insulating bars



Glasdicke
Glass thickness



Pfosten
Mullion



Typ, Ausführung
Type, design



Profilgruppe Flügelprofil
Profile group – vent profiles



Riegel
Transom